

# Technical data sheet

## Product features



### High-capacity boiling kettle gas indirect 200 l with automatic water charge

<b>Model</b>	<b>SAP Code</b>	00019456
BIQ 90/100 200 G AWF	<b>A group of articles - web</b>	Boiling kettles



- Device type: Gas unit
- Device heating type: Indirect
- Ignition: Electric
- Steam pressure regulation: Automatic - the pressure switch regulates the performance of the device
- Filling: Mechanical cock
- Jacket filling: Automatic
- Drain valve diameter: 2"
- Basin volume [l]: 200
- Usable volume [l]: 183

<b>SAP Code</b>	00019456	<b>Power gas [kW]</b>	24.000
<b>Net Width [mm]</b>	1000	<b>Type of gas</b>	Natural gas, propane butane
<b>Net Depth [mm]</b>	928	<b>Basin volume [l]</b>	200
<b>Net Height [mm]</b>	900	<b>Usable volume [l]</b>	183
<b>Net Weight [kg]</b>	193.00	<b>Device heating type</b>	Indirect
<b>Power electric [kW]</b>	0.023	<b>Steam pressure regulation</b>	Automatic - the pressure switch regulates the performance of the device
<b>Loading</b>	230 V / 1N - 50 Hz		

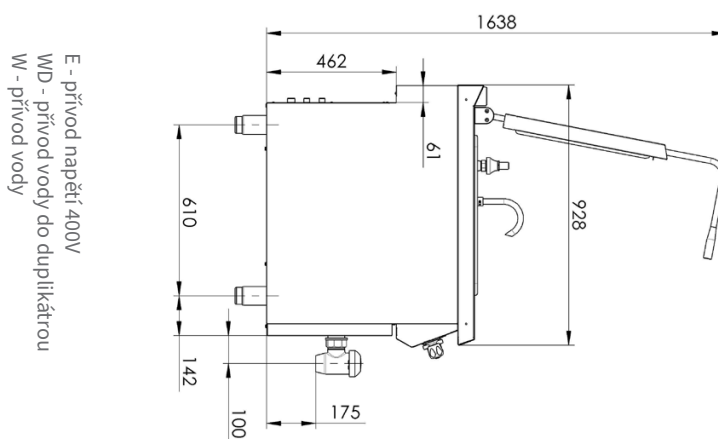
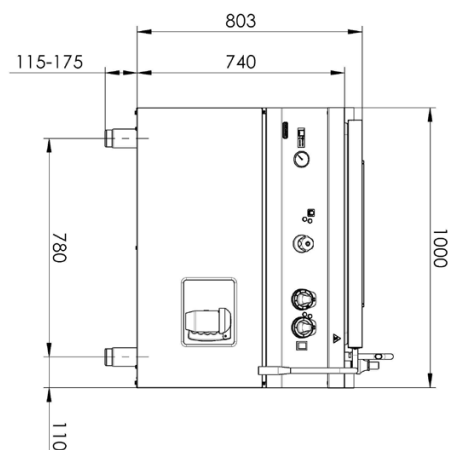
# Technical data sheet

Technical drawing

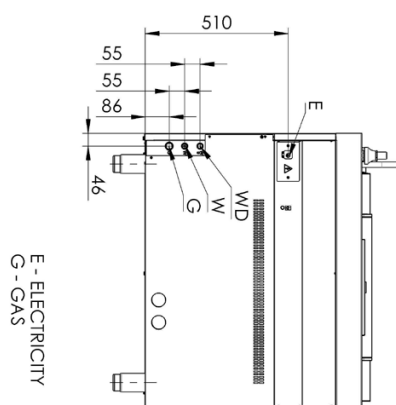


## High-capacity boiling kettle gas indirect 200 l with automatic water charge

<b>Model</b>	<b>SAP Code</b>	00019456
BIQ 90/100 200 G AWF	<b>A group of articles - web</b>	Boiling kettles



E - přívod napětí 400V  
WD - přívod vody do duplikátu  
W - přívod vody



E - ELECTRICITY  
G - GAS

# Technical data sheet



## Product benefits

### High-capacity boiling kettle gas indirect 200 l with automatic water charge

<b>Model</b>	<b>SAP Code</b>	00019456
BIQ 90/100 200 G AWF	<b>A group of articles - web</b>	Boiling kettles

1

#### Top cover in front panel design

thanks to the design, the lines of the front panel and the lid are unified, the designed design allows easy maintenance by the user

2

#### Ergonomic extended handle

even people of smaller stature can comfortably lift the lid to the fully open state

3

#### Sloped bottom for the sink

the entire volume of the container will flow out without the need to carry the food to the sink

4

#### Reinforced bottom without deformations

thanks to the reinforcements in the intermediate shell, the service life of the duplicator is extended, there is no deformation due to heat and expansion of the material

5

#### Spill-resistant design controls

ergonomically comfortable, preventing water from entering the device

6

#### Lines in the container

the operator knows at a glance how much food is inside the cooking vessel

7

#### Duplicator automatic venting

thanks to the integrated pressure switch, the pressure in the intermediate casing is automatically regulated

8

#### Automatic duplicator allowance

due to automatic filling/offering, the operator does not have to stand for the device to fill and check the boiler filling

9

#### Rotatable filling arm

convenient filling of the duplicator container, the hanger is used for maintenance and cleaning of the cooking container

10

#### Integrated waste overflow

condensed water drains directly from the top plate

11

#### Molded top plate

easier operation and cleanability, water does not flow over the edge on controls and service  
the top plate retains its stiffness without deformation over time due to use

12

#### Integrated waste overflow

the operator can check the pressure in the intermediate casing

13

#### A pre-prescribed upper lid with a lifting mechanism

lid holds open in different positions

14

#### Automatic water level control using self-diagnostic feedback

when the ideal water level is lost or when the associated functional components fail, a fault is automatically diagnosed  
the functional components are then automatically shut down

# Technical data sheet

## Technical parameters



### High-capacity boiling kettle gas indirect 200 l with automatic water charge

<b>Model</b>	<b>SAP Code</b>	00019456
BIQ 90/100 200 G AWF	<b>A group of articles - web</b>	Boiling kettles

**1. SAP Code:**

00019456

**2. Net Width [mm]:**

1000

**3. Net Depth [mm]:**

928

**4. Net Height [mm]:**

900

**5. Net Weight [kg]:**

193.00

**6. Gross Width [mm]:**

1035

**7. Gross depth [mm]:**

1030

**8. Gross Height [mm]:**

1085

**9. Gross Weight [kg]:**

201.00

**10. Device type:**

Gas unit

**11. Construction type of device:**

Stationary

**12. Power electric [kW]:**

0.023

**13. Loading:**

230 V / 1N - 50 Hz

**14. Power gas [kW]:**

24.000

**15. Ignition:**

Electric

**16. Type of gas:**

Natural gas, propane butane

**17. Protection of controls:**

IPX4

**18. Exterior color of the device:**

Stainless steel

**19. Material:**

AISI 304 top plate and cladding

**20. Indicators:**

operation and warm-up

**21. Drain valve diameter:**

2"

**22. Worktop type:**

Molded - comfortable cleaning maintenance

**23. Worktop material:**

AISI 304

**24. Worktop Thickness [mm]:**

2.50

**25. Surface finish:**

polished stainless steel

**26. Device heating type:**

Indirect

**27. Basin volume [l]:**

200

**28. Volume capacity of the container [l]:**

200.00

# Technical data sheet



## Technical parameters

### High-capacity boiling kettle gas indirect 200 l with automatic water charge

<b>Model</b>	<b>SAP Code</b>	00019456
BIQ 90/100 200 G AWF	<b>A group of articles - web</b>	Boiling kettles

**29. Maximum device temperature [°C]:**

100

**30. Number of power control stages:**

2

**31. Service accessibility:**

Trough the frontal panel

**32. Safety element:**

manometer  
monitoring the level in the duplicator  
thermostat against overheating in the switchboard

**33. Safety thermocouple:**

Yes

**34. Safety thermostat:**

Yes

**35. Adjustable feet:**

Yes

**36. Bottom thickness:**

2.50

**37. Bottom material:**

AISI 316

**38. Type of pan:**

Fixed

**39. Usable volume [l]:**

183

**40. Filling:**

Mechanical cock

**41. Jacket filling:**

Automatic

**42. Basin shape:**

Practically shaped bathtub spout to minimize spillage

**43. Steam pressure regulation:**

Automatic - the pressure switch regulates the performance of the device

**44. Type of drain valve:**

conical

**45. Overflow:**

Yes

**46. Manometer:**

Yes

**47. Water filling type:**

Cold

**48. Connection to a ball valve:**

1/2

**49. Water supply connection:**

1/2"